

# PureSoft

The hygiene paper of the future



**sabino** wepa PureSoft







# The new generation of recycled paper: **Satino PureSoft**

# Just feel it!

Noticeably soft and comfortable.

**Quality that you feel straight away:**  
PureSoft from Satino by WEPA – luxuriously soft, especially absorbent and dermatologically tested.

**TEST NOW**  
AND BE CONVINCED!

[www.satino-by-wepa.eu/puresoft](http://www.satino-by-wepa.eu/puresoft)

**PureSoft from Satino by WEPA is a sensation in the use of raw materials:**

the new premium toilet paper of the future for your sustainable washroom. 100% recycled – made from cardboard.

Satino PureSoft is unbleached, luxuriously soft, particularly absorbent and hygienically safe in all applications – from towel paper and toilet paper to kitchen rolls.

Satino PureSoft is the result of intensive research and advanced paper technology at WEPA – and a milestone in the development of environmentally friendly premium fibres. Thanks to its innovative manufacturing process, PureSoft is one of the softest natural coloured papers on the market.





# Unbeatable softness and sustainability

Satino PureSoft: The environment-friendly recycling paper – premium quality as good as virgin fibre hygiene paper. A skin-friendly premium hygiene paper with a top-class performance.



**100%**

recycled – made from cardboard



**100%**

unbleached and therefore instantly recognisable as sustainable



**Easy to dissolve** already after 20 seconds

This is how PureSoft avoids pipe blockages and unburdens the sanitary infrastructure.



**Environmentally friendly packaging** thanks to 60% less fresh plastic

This is how PureSoft reduces environmental pollution and preserves valuable raw materials.



**100%**

soft, absorbent premium quality



**100%**

hygienic and safe in all applications



# A raw material innovation for the future

Cardboard is turned into 100% recycled premium hygiene paper:

with Satino PureSoft we tap into recovered paper qualities that previously could not be used in tissue products. Satino PureSoft thus marks a new level of sustainability. The raw material for PureSoft has a 70% smaller environmental footprint than virgin fibre from wood.

*“Through advanced technologies, we convert used fibres from cardboard and packaging into high-quality hygiene paper. This keeps valuable fibres in the material cycle.”*

Stefan Gräter, Head of Sustainability WEPA

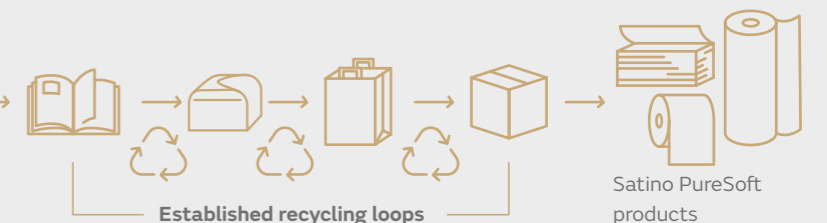
## CURRENT FIBRE CASCADE

In Europe, the majority of hygiene papers are made of virgin wood-based fibres.

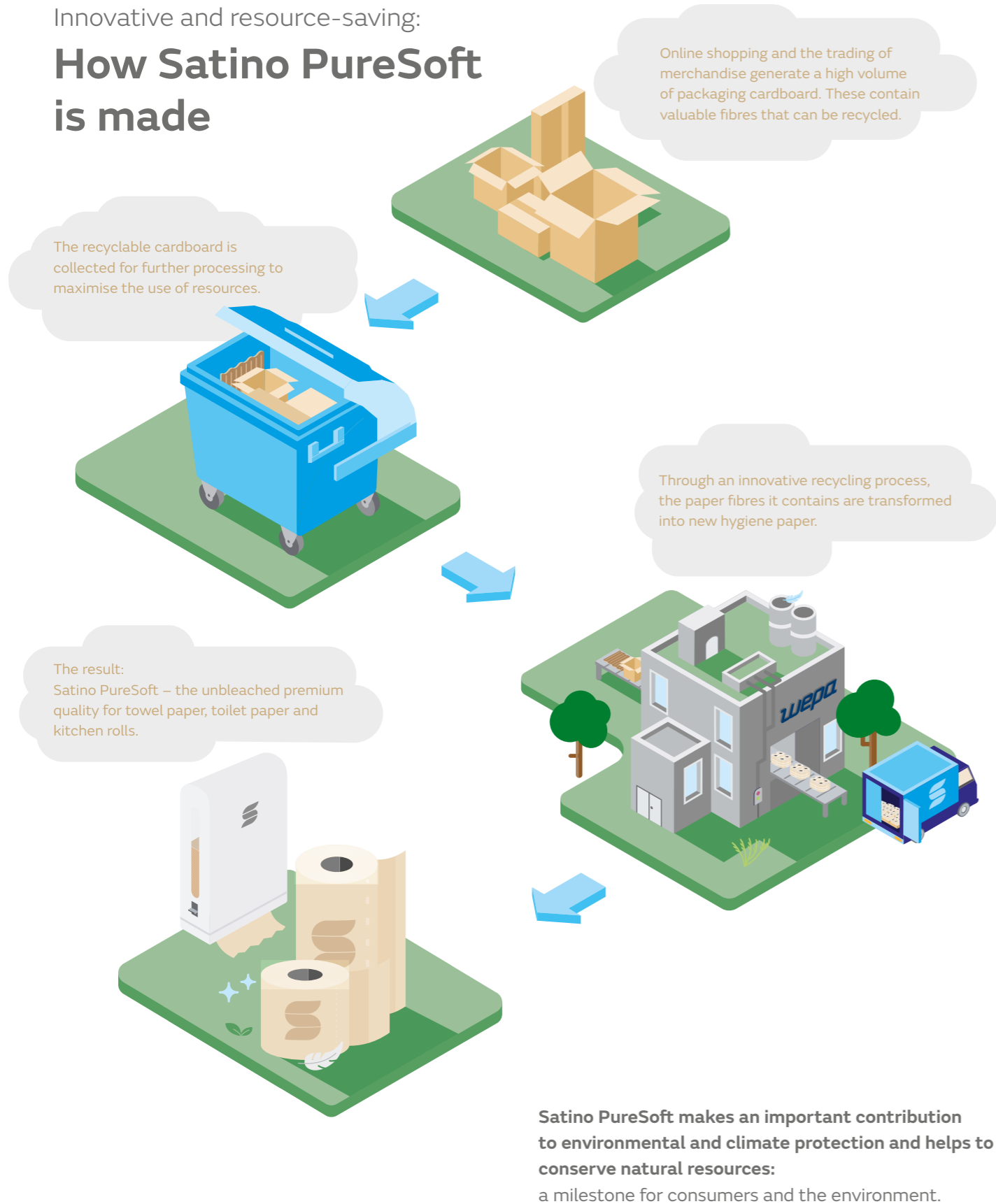


## PURESOFT FIBRE CASCADE

Cascaded use of fibres ensures resources are used to their full potential.



Innovative and resource-saving:  
**How Satino PureSoft is made**



Visibly sustainable and noticeably soft:  
**Satino PureSoft is popular with consumers**



With its premium quality, PureSoft distinctly rebuts the belief that recycled paper is hard, uncomfortable or even inferior. Extensive consumer tests confirm this.\*

*“Noticeably soft paper with a natural colour – that’s really unique!”*

**89%**

praised the sustainable concept and especially the aspect of resource-saving production without the use of bleaching agents.

**84%**

rated PureSoft as being very soft.

**80%**

said they liked the product.

**78%**

liked the natural colour, which at first glance identifies Satino PureSoft as an ecological product.

\* IPSOS Consumer Study PIU 2021



# Future-oriented quality for all applications

Environmentally friendly and soft, Satino PureSoft is available as towel paper, toilet paper and kitchen roll.

Art. no.	Plies	Fold type	Length/ Roll (m)	Sheets	Sheet size (cm)	Ø-Roll (mm)	Embossing	PU	Pallet
<b>Satino PureSoft Paper towels</b>								<b>BagPack/Foil bag</b>	
277520	2	W-Fold	–	120	20.6 x 32.0	–	Diamond	25 x 120	40
277530	2	Z-Fold	–	150	20.6 x 24.0	–	Diamond	25 x 150	40
277540	2	V-Fold	–	200	24.0 x 23.0	–	Diamond	20 x 200	32
277550	2	Z-Fold	–	150	24.0 x 24.0	–	Diamond	25 x 150	32
277560	2	W-Fold	–	120	24.0 x 32.0	–	Diamond	25 x 120	32
277570	2	V-Fold	–	160	24.0 x 23.0	–	Diamond	20 x 160	32
277810	2	W-Fold	–	120	22.0 x 32.0	–	Diamond	25 x 120	36
277820	2	V-Fold	–	268	24.0 x 21.0	–	Diamond	15 x 268	32
								<b>Cardboard box</b>	
277830	2	Z-Fold	–	200	20.6 x 24.0	–	Diamond	15 x 200	60
<b>Satino PureSoft Kitchen rolls</b>								<b>Foil</b>	
161050	2	–	14	64	26.0 x 22.0	105	Triangle	8 x 4	21
175890	3	–	14	64	26.0 x 22.0	105	Triangle	8 x 4	21
<b>Satino PureSoft Toilet paper</b>								<b>Foil bag</b>	
044520	4	–	18	130	9.4 x 13.8	110	Flower quilted	7 x 8	27
066540	2	–	27.5	250	9.4 x 11.0	108	Waffle	8 x 8	33
066550	2	–	44	400	9.4 x 11.0	117	Waffle	6 x 8	33
076970	3	–	27.5	250	9.4 x 11.0	108	Waffle	8 x 8	33
076980	3	–	30	250	9.4 x 12.0	125	Waffle	9 x 8	18
<b>Satino PureSoft folded Toilet paper</b>								<b>Cardboard box</b>	
066560	2	V-Fold	–	300	9.8 x 21.0	–	Star Spider	30 x 300	49
<b>Satino PureSoft System Toilet paper</b>								<b>Cardboard box</b>	
307140	2	–	100	724	9.8 x 13.8	135	Waffle	24 x 1	36
<b>Satino PureSoft Jumbo - and Centrefeed Toilet paper</b>								<b>Foil</b>	
307150	2	–	180	720	10.8 x 25.0	184	Waffle	12 x 1	40
318810	2	–	180	720	9.2 x 25.0	184	Waffle	12 x 1	44
318820	2	–	380	1,520	9.2 x 25.0	260	Waffle	6 x 1	44
<b>Satino PureSoft Centrefeed</b>								<b>Foil</b>	
314290	2	–	150	428	20.0 x 35.0	200	Diamond	6 x 1	40
<b>Satino PureSoft Paper Towel rolls</b>								<b>Foil</b>	
314300	2	–	170	–	20.5 x 17,000	190	Waffle	6 x 1	40
314400*	2	–	170	–	20.5 x 17,000	190	Waffle	6 x 1	40

\* SYS1-compatible with AutoCut and Sensor dispensers

## SUSTAINABLE PACKAGING SOLUTIONS



PureSoft comes in resource-saving foil packaging for optimal handling, protected transport and safe storage.



The foil is produced from 60% recycled PCR (post consumer recycle) and is 100% recyclable.



The ecological footprint of this foil: more than 65% smaller than comparable cardboard packaging.



## PureSoft Toilet paper

Especially soft, comfortable and absorbent thanks to 2-4 layers. Small rolls in resource-saving foil packaging.

MT1 compatible.

Art. no. 076970; 076980; 066540; 066550; 044520



## PureSoft folded Toilet paper

Particularly soft and comfortable and an economical choice for public areas.

BT1 compatible.

Art. no. 066560



## PureSoft System Toilet Paper

Environmental friendliness and cost-effectiveness with a system: The 2-ply system jumbo roll ensures a secure supply and allows for long refill intervals.

JT3 compatible.

Art. no. 307140



## PureSoft Kitchen rolls

High-performance 2-3-ply quality, absorbent and food-safe.

Art. no. 161050; 175890



## PureSoft Paper towel

Pleasantly soft and absorbent, 2-ply, Z-, W- or V-fold. Resource-saving foil packaging made from 60% PCR.

PT2- und PT3 compatible.

Art. no. (PT2) 277520; 277530; 277550; 277560;  
277810; 277820; 277830\*

Art. no. (PT3) 277540; 277570

\*in cardboard packaging



## PureSoft Jumbo-and Centrefeed Toilet paper

Economy, comfort and sustainability in one product: 2-ply, 180m or 380m length.

JT1-, JT2- und CF2 compatible.

Art. no. (JT1) 318810

Art. no. (JT2) 318820

Art. no. (CF2) 307150



## PureSoft Paper Towel rolls

The classic towel roll: 170m length in soft, absorbent 2-ply quality.

PT1- und SYS1 compatible.

Art. no. (PT1) 314300

Art. no. (SYS1) 314400



## PureSoft Centrefeed

The towel paper for central extraction: 150m length, 2-ply, pleasantly soft and absorbent.

CF1 compatible.

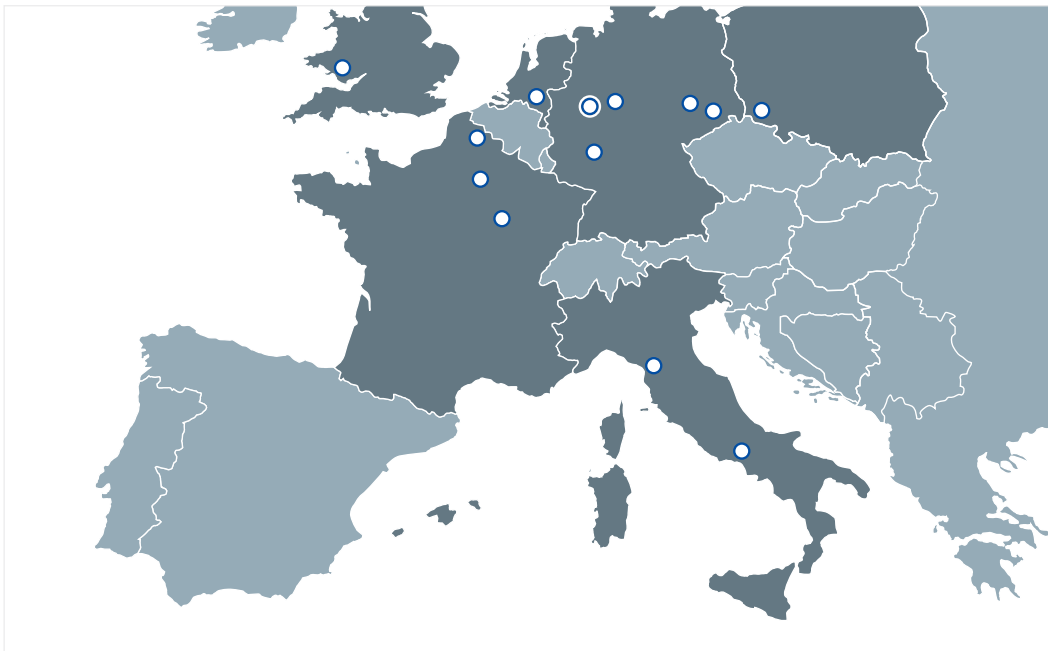
Art. no. 314290



# WEPA PROFESSIONAL

WEPA Professional is Europe's leading hygiene specialist for sustainable, innovative washroom hygiene solutions. With its BlackSatino and Satino by WEPA brands, WEPA Professional specifically addresses the needs of companies and institutions in public spaces. The range includes everything that makes a hygiene experience safe and convenient: hygiene paper, intelligent dispenser systems, air fresheners and hand sanitiser solutions. WEPA Professional is part of the WEPA Group, one of the three largest hygiene paper manufacturers in Europe and market leader in the production of hygiene paper from recycled fibre. Its registered office is in Arnsberg, North Rhine-Westphalia, Germany.

## WEPA in Europe



Your professional contact:



**Kontakt Danmark Virena**  
**info@virena.dk**  
**Telefon 43 42 44 06**

Misprints and changes reserved.  
All deliveries and payments shall be made exclusively in accordance with our General Terms and Conditions of Delivery and Payment, which are available for viewing / downloading at [www.satino-by-wepa.eu](http://www.satino-by-wepa.eu)

Printed climate neutrally on  
FSC® Mix paper



WEPA Professional GmbH

WEPA Nederland B.V. B

WEPA Piechowice Sp. z o.o. U

[www.virena.dk](http://www.virena.dk)